

# Our 2021 impact at a glance

Over 900 million people provided with essential products and services including food, education, health, technology and financial products and services in 2021\*

\* This figure does not represent the number of unique users as the same people can be multiple time users in our different investees

21 funds  
€2.3bn

raised since 1994



Total **taxes and fees\*** paid by all our investees to the governments in 2021:

€210M

\* Including corporate taxes and all transfers to governments made by the investees



121

Active Portfolio Companies

Of which

16

were **new investments**

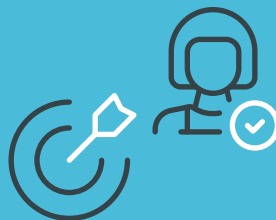


Number of **direct jobs** supported by all our investees in 2021:

56,500

(+10.8% versus 2020)

58% received training in 2021



40%

of current investees have **career advancement initiatives** targeted at **women**

43%



of **employees** at investee companies are **women**. (+46% versus 2020)



33%

of **managerial positions** at investee companies held by **women**. (+10% versus 2020)